

# R-F-M

## THE MIDLANDS MART

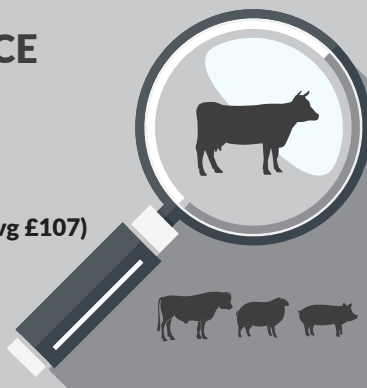
— RUGBYFARMERSMART.COM —

The Charolais Pavilion, Avenue M, Stoneleigh Park,  
Kenilworth, Warwickshire CV8 2RG  
02476 697731 | [www.rugbyfarmersmart.com](http://www.rugbyfarmersmart.com) | 43/139/8013  
Office hours: Monday to Friday - 9.00am - 5.00pm  
Opening Time: Gates open at 5.30am until further notice

## MARKET REPORTS FOR MONDAY 9TH JANUARY 2023

### MARKET AT A GLANCE

Prime Steers to 313p/kg & £1989  
Prime Heifers to 321p/kg & £2219  
Prime Bulls to 282p/kg & £2203  
OTM Cows to 218p/kg & £1832  
Prime Hogg SQQ 242p/kg (1302 Avg £107)  
Prime Hogs to 318p/kg & £139  
Ewes to £220 (1099 Avg £90.50)  
Calves to £300 (40)



## THURSDAY 12TH JANUARY SALE OF STORE CATTLE, STORE LAMBS & IN-LAMB EWES

Catalogues & Entry Forms available by post, email or on the website  
[www.rugbyfarmersmart.com](http://www.rugbyfarmersmart.com) | [admin@rugbyfarmersmart.com](mailto:admin@rugbyfarmersmart.com)

## CATTLE: 108 FORWARD

Rugby Farmers Mart

Prime Cattle Sale Monday 9th January 2023.

108 cattle forward consisting of 56 steers, 33 heifers, 9 Young bulls and 10 overage cattle.

Another wonderful trade had by all with all classes flying from commercial to the best. Still by far out weighing returns from other outlets.

Jack Peacock of Norfolk topped the pence per kilo in the clean with his homebred heifer selling to 321ppk and his bullock to 313ppk.

Burbidge Farms not far behind with some cracking bullocks selling to 312ppk.

N Arrowsmith topped the bullocks at £1989.

Robert Nichols with usual outstanding quality topped the heifers at £2219.

PM Wilks back with some fantastic bulls at £2203 or 282ppk.

Cows again dearer on the week with Frank Page topping at 218ppk.

A&N Ellis topping at £1831

With demand remaining strong and national shows of prime cattle numbers easing more numbers are required on a Monday to suit demand.

*Auctioneer: Emma Coupland (07808 271218)*



The Board of Directors are pleased to announce Nathan Shaw as Lairage & Yardsman Manager. Many of you will know Nathan whom is one of the original staff members of RFM, Nathan will be overseeing Sunday night lairage and should be contacted to book the same in 07460120293.

**\*\*FAT CATTLE NEW TIMINGS\*\***  
**COWS 8:30AM**  
**PRIME CATTLE 9AM**

## STEERS & BULLS

Top prices per Head				FA
Limousin (bull)	784kg	£2203	P M Wilks	Y
Limousin (bull)	744kg	£2098	P M Wilks	Y
Limousin (bull)	792kg	£2043	P M Wilks	Y
British Blue	672kg	£1989	N Arrowsmith	Y
Blonde (bull)	768kg	£1958	Townshend Partners	Y

Top prices per Kilo				
Limousin x	550kg	313ppk	J Peacock	Y
Limousin x	602kg	312ppk	D N Burbidge	Y
Limousin	542kg	305ppk	J Peacock	Y
Limousin x	574kg	305ppk	D N Burbidge	Y
Limousin x	624kg	301ppk	D N Burbidge	Y

## HEIFERS

Top prices per head				FA
Charollais x	730kg	£2219	RF & JA Nichols	Y
Charollais	730kg	£2139	RF & JA Nichols	Y
Charollais x	674kg	£1988	N Arrowsmith	Y
Limousin x	576kg	£1843	N Arrowsmith	Y
Limousin x	580kg	£1786	N Arrowsmith	Y
Top prices per kilo				
Limousin x	552kg	321ppk	J Peacock	Y
Limousin x	576kg	320ppk	N Arrowsmith	Y
Limousin x	580kg	308ppk	N Arrowsmith	Y
Charolais x	730kg	304ppk	RF & JA Nichols	Y
Charolais x	674kg	295ppk	N Arrowsmith	Y

## Len Eadon 1999-2022 Tribute page

<https://leneadon.muchloved.com/?fbclid=IwAR1QM9qsvxqscmyehDUwuJvjrBR4KICliDqyezWbDYBEAsDaB164bZn50g4>

## COWS

Top prices per head Cows					FA
Charolais	964kg	£1832	A & N Ellis		Y
Hereford	762kg	£1661	Page Bros		Y
Limousin	798kg	£1556	F A Osborne		Y
Hereford	686kg	£1379	P M Jarrom		Y
Top prices per kilo					
British Blue	762kg	218ppk	Page Bros		Y
Limousin x	686kg	201ppk	P M Jarrom		Y
Limousin	646kg	198ppk	J Gibson		Y
British Blue	798kg	195ppk	F A Osborne		Y



## SHEEP: 2574 FORWARD PRIME HOGGS: 1302 FORWARD SQQ 242P/KG AVG £107

As predicted a continued downturn in trade with deadweight waiting lists endless and reports of very slow Sales ringing throughout the Sales ring, as a result a lower number of sheep through and sold. Lean lambs a very hard sell throughout with Abattoirs unwilling to kill. An SQQ of 242p/kg though a trade to be proud of in these conditions. 242p/kg @46% £5.26p/kgdw equivalent and £108 all in avg a proper return. Best end meat a nice trade in the Exports seeing 32kg from Passmore and Nunnerley sell at 281p/kg. P Batchelor sold Beltex at 41.5kg 280p/kg, 43kg 277p/kg and 44.5kg 276p/kg. T P Boston 41kg at 263p/kg. Heavies a much reduced trade throughout as New Zealand imports rule the Catering Markets. Weighted Lambs selling to 46kg at 261p/kg from Roger Coombes and 46kg from P Batchelor 257p/kg, 50.5kg at 255p/kg and T P Boston 46kg at 250p/kg. Export weights totting to £123 at 44.5kg from P Batchelor whilst R Coombes 45.5kg at £114.50 and 45kg from E Taylor 45kg and N Sinden 45kg at £114. Heavies today topping at £139 at 57kg for P Batchelor with Messrs Nichols 63kg at £139 and Wally McCurdie 61kg at £136. E Hull 60kg at £134.

Trade a real damp squid at the moment with Buyers, Sellers and Abattoirs all making losses. Roll on the departure of the January Blues.

DIRTY LAMBS ARE A PROBLEM. THEY MUST BE CLIPPED. If not they will be marked as Dirty and unwarranted with those Binned the responsibility of the Vendor.

From the 1st January all Sunday night lairage fat sheep will be subject to compulsory clipping either by the vendor or by the Sunday night clipping team.

### CLEANLINESS OF SHEEP;

WE HAVE NOW HAD INCIDENTS OF SHEEP BEING BINNED AND REJECTED ON THE KILL LINE DUE TO DIRTY BELLIES. IT IS FSA AND TRADING STANDARDS LAW THAT ANIMALS MAY NOT BE SENT FORWARD FOR SLAUGHTER IN A STATE WHEREBY "THE STANDARDISED PROCESS OF DRESSING CANNOT BE COMPLETED WITHOUT TOUCHING DIRT OR DETRITUS, THEN THE ANIMAL SHOULD NOT PASS ANTI-MORTEM INSPECTION". IN SIMPLE TERMS STOCK SHOULD BE CRUTCHED AND BELLIED TO ALLOW THE REMOVAL OF THE LAMBS INTERNAL ORGANS. LAMBS NOT FITTING THIS DESCRIPTION CANNOT BE PRESENTED IN OUR SALES.

**Auctioneer: Thomas Wrench**

## PRIME HOGGS SQQ 242p/kg

### Per Kilo **under 45kg**

Beltex x	44.50kg	301ppk	P Batchelor
Beltex x	43.00kg	277ppk	P Batchelor
Beltex	45.50kg	252ppk	D G Coombes
Texel x	45.00kg	253ppk	N Sinden
Texel x	45.00kg	253ppk	E J Taylor & Son

### Per HEAD

Beltex	44.50kg	£123.00	P Batchelor
Beltex	43.00kg	£119.00	P Batchelor
Charollais x	45.50kg	£114.50	D G Coombes
Texel x	45.00kg	£114.00	N Sinden
Charollais x	45.00kg	£114.00	E J Taylor & Son

### Per Kilo **over 45kg**

X Bred	46.00kg	261ppk	J Webster
Charolais x	46.00kg	261ppk	D G Coombes
Beltex	46.00kg	257ppk	P Batchelor
Charollais x	47.00kg	256ppk	D G Coombes
Beltex x	50.50kg	255ppk	P Batchelor

### Per HEAD

Beltex x	57.00kg	£139.00	P Batchelor
Texel x	63.00kg	£139.00	RF & J Nichols
Suffolk x	61.00kg	£136.00	WW & JA Mccurdie
Charollais x	60.00kg	£134.00	E A Hull
Charollais x	63.00kg	£131.00	D G Coombes

Sunday lairage is now open from 9am-3:00pm  
Gates close 3:00pm **STRICTLY.**

## DROVERS WANTED

To work Sale days, including bank holidays  
Experience with livestock preferred, must be able to work as part of a team.  
To find out more details please call Sophie on 02476 697731 or email  
[admin@rugbyfarmersmart.com](mailto:admin@rugbyfarmersmart.com)

## CULL EWES: 1098 FORWARD



A hard day selling. Trade stood still and as with the lambs Ewes hard to sell to shops. Very few interested buyers and those loyal enough to support exasperated by unrealistic Vendor expectations. Ewes of all grades back £10 on the week and Mules £20. Lean Ewes again without audience. Best Ewes easiest to sell making a top of £220 and £198 for Fordwell Farm Partners and £172 for Townshend Partners.. RFS £150 with and meated White Faces £135 plus. Suffolks to £145 and £146 from M Hoyle with the majority of meat £120. Mules to £106 for Ted Taylor but most meated Ewes £88 to £90 with light Mules £70 to £80. A simple matter of Supply well exceeding demand throughout the UK as testified by today's Scottish Buyer in attendance.

**Auctioneer: Thomas Wrench**

### EWES

Beltex x	£220	Fordwell Farm Partners	Texel	£150	RFS Ltd
Suffolk x	£198	Fordwell Farm Partners	Beltex	£150	PA & HM Coles
Beltex x	£172	Townshend Partners	Texel	£146	M Hoyle

### FREELANCE FARM SECRETARY/PERSONAL ASSISTANT



Someone to help with the smooth running of your Farm, Business or Event, who can deal with invoicing, book keeping, livestock movements, planning and project management along with other administrative duties?

Excellent organisation skills with tip top verbal and written communication, and a high level of competency with various software programmes.

Used to dealing with all areas of running a successful Business.

A friendly and outgoing personality who is happy to work alone or as part of a team.

Contact Lynn  
07967 138350

### GRAZING WANTED

Ideally 20 and 50 acres in a 10 mile radius of Southam for sheep/cattle/ mowing  
Please call 07973954836



## **CALVES: 40 FORWARD**

Calves remain difficult to place during these recent times , plenty of competition for quality much harder to place for others

Top price today went to Phil Dyson for a Limousin Bull Calf at £300 and sold to Messrs J & BD Tustian

Next calf day is the StowAg Show and Sale on the 23rd January

Limousin Bulls. £260 to £300

Limousin Hfrs. £140 to £200

British Blue Bulls £58 to £245

British Blue Hfrs £50 to £150

Angus Bulls. to £130

Angus Hfrs. £30 to £90

Longhorn Bull. to £42

***Auctioneer Tim Webster***



## **STORE SHEEP: 176 FORWARD**

A real mixture of Lambs forward today topping at £101.50 for Mr N Sinden for meaty Charollais lambs

Next sale is this Thursday 10.30am over 700 booked already

***Auctioneer Tim Webster***

### **PUPS FOR SALE**

Cockapoo Puppies  
Ready beginning of Feb  
Call James for more info  
07989300678

### **WANTED**

IAE Cattle Crush £350.00 ono  
In good condition.  
Telephone 07870264654



# Farm insurance, the way it should be

We're a family-run business and pride ourselves on forging long term relationships with our farming and agricultural clients. Covering the Midlands, South West and South East, we deliver an extensive range of farm, agri business and equine policies tailored to you.

Farm & Equine **01865 290915**

General **01865 844998**

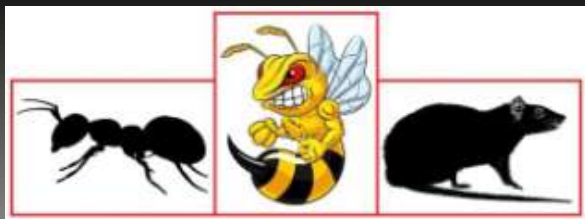
 Follow us **@County\_Farm**

[www.county-insurance.co.uk/farms](http://www.county-insurance.co.uk/farms)



Independent Insurance Brokers County Insurance Services Limited. Address and Registered Office: County House, Glyme Court, Langford Lane, Kidlington, Oxon OX5 1LQ. Authorised and regulated by the Financial Conduct Authority (FCA) (FRN: 597267). Company registered in England No. 08411634





# RDB Pest Control

Reliable | Trustworthy | Fast | Effective  
Competitive Prices

**Ryan Brunt**

**07922 091 459**

**[www.rdbpestcontrol.co.uk](http://www.rdbpestcontrol.co.uk)**

## **Why You Should Choose Us**

- ✓ Cater for Red Tractor and Farm Assurance Schemes
- ✓ Wide ranging experience on Farms with over 25 existing routine agricultural clients
- ✓ Fully qualified - RSPH Level 2 in Pest Control
- ✓ Trustworthy and security vetted
- ✓ Prompt, reliable fast response

## **A selection of sites where I have experience:**

Farmers Market • Local Airport • Farms • Warehouses •  
Industrial Estates • Food Premises • Private Houses • Country  
Estates • Building Sites • Local Councils • Schools •  
Day Nurseries • Care Homes

# WE COVER SMALL FARMS, LARGE FARMS AND EVERYTHING IN BETWEEN



From sheep farmers to arable farmers.  
Flower growers to poultry farmers.

NFU Mutual is proud to insure over 75% of UK farms with our Farm Select insurance. But we want more farms to benefit from great cover and local service. NFU Mutual has introduced Farm Essentials insurance – designed to meet the needs of smaller farms.

As your local agency, we are close by and can provide expert advice and hands-on support when you need it.

Call **Coventry Office** on **02476 444519**

NFU Mutual, 6 Eastwood Business Village,  
Harry Weston Road, Binley Business Park,  
Coventry, CV3 2UB



**NFU Mutual**  
FARM INSURANCE

## WANTED

Muck bags wanted so Leah and Clara (the lovely young drover girls) can continue to fund their uni social life! Please drop them at the market if you have any sitting around  
Thank you

## FOR SALE

Hyline point of lay hens and growing birds for sale.  
Brown egg layers suitable for free range or deep litter.  
contact Mark Martin on;  
07976 260 775

## T.A.R HIRE

### FOR HIRE:

- 10 & 14 TON REAR MUCK SPREADERS
- 12 TON TRAILERS WITH SILAGE SIDES
- ROAD SWEEPER
- FLAT TRAILERS
- GRASS TOPPERS
- CONTRACT MUCK SPREADING SERVICES

### CONTACT:

DAVENTRY (ROB) - 07801791212

HINCKLEY (ALAN) - 07802951179

FINISHING CATTLE? GROWING CATTLE? FEEDING SHEEP?

BERRYSTOCK  
FEEDS



Do you want **HIGH PERFORMANCE, COST EFFECTIVE, FULLY ASSURED and COMPLETE FEEDS?** Then contact **BERRYSTOCK FEEDS:**

Tel: 01788 890320 E-Mail: [john@berryfieldsfarm.co.uk](mailto:john@berryfieldsfarm.co.uk) Web: [www.berrystockfeeds.co.uk](http://www.berrystockfeeds.co.uk)

BERRYFIELDS FARM, DAVENTRY, NN11 8NP



**THE MIDLANDS MART**

---

RUGBYFARMERSMART.COM

---

## **FORTHCOMING SALES**

**THURSDAY 12TH JANUARY  
SALE OF STORE CATTLE, IN-LAMB EWES &  
STORE LAMBS**

**Vendors who are wishing to sell stock  
please feel free to contact:**

**Tom Wrench** - 07774 723758 Market Manager & Auctioneer

**Tim Webster**- 07437 101163 Auctioneer & Fieldsman

**Emma Coupland**- 07808 271218 Fat Cattle Auctioneer

**Charlie Betteridge**- 07760266701 Fieldsman

**Nathan Shaw**-07460120293 Yard Manager

who will gladly make

**A FREE ON FARM VISIT & VALUATION**



---

**Follow us on social media:**

Facebook & Twitter - @RFMMidlandsMart

Instagram - rugbyfarmersmartLtd